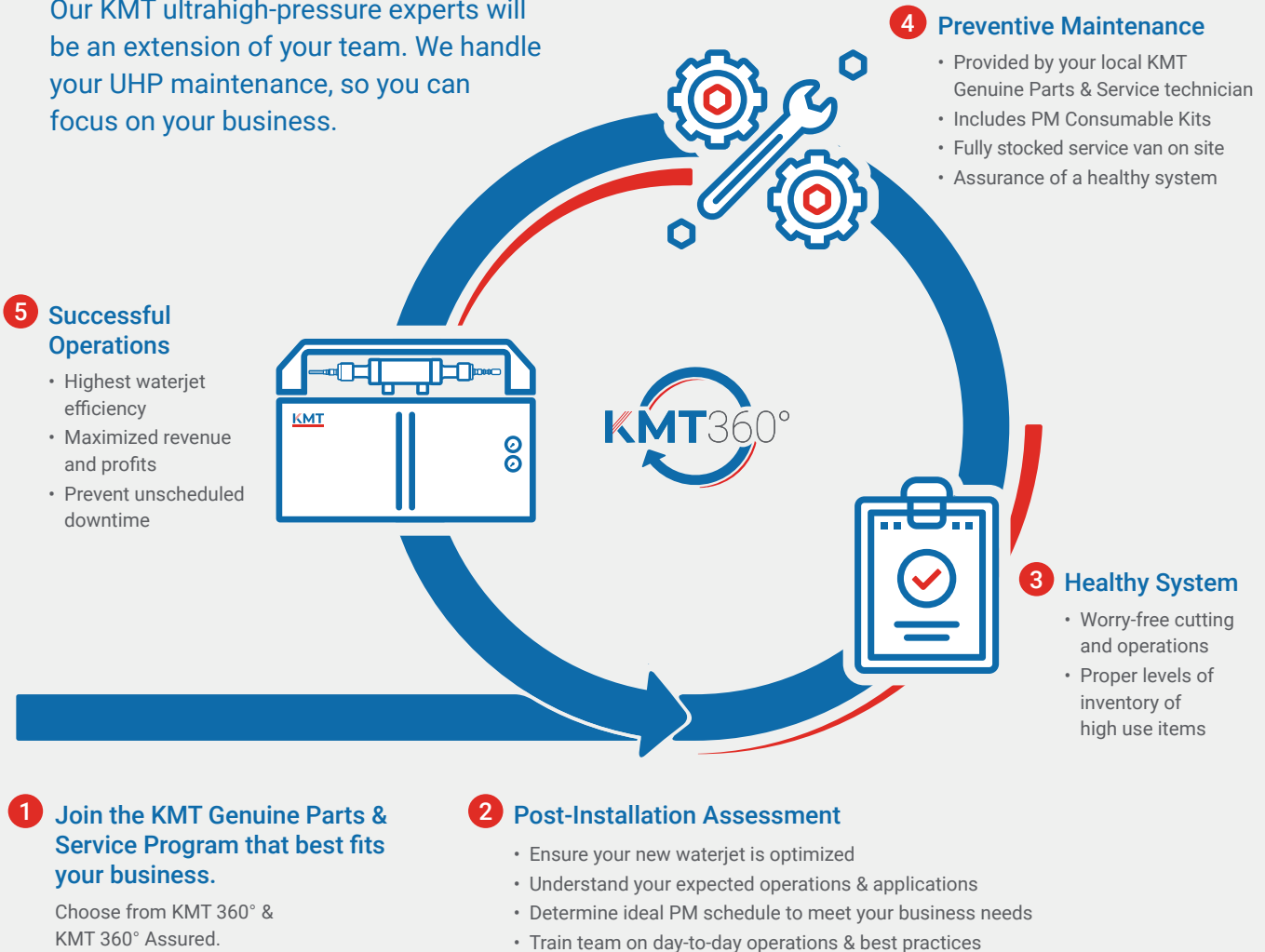


# KMT360° Preventive Maintenance Service Cycle

Our KMT ultrahigh-pressure experts will be an extension of your team. We handle your UHP maintenance, so you can focus on your business.



## Preventive Maintenance Matters

Your ultrahigh-pressure components and pump are the heart of your waterjet. Break fix scenarios end up costing much more than expected due to untimely shutdowns, excessive parts consumption, and overhead, not to mention missed business opportunity costs. Planned preventive maintenance completed by the experts of KMT Genuine Parts & Service equals a healthy waterjet system, efficient operations, and peace of mind.

## KMT Genuine Parts & Service guarantees:

- Service call reports for full life of system
- Free software updates for life of pump
- 24/7 service hotline
- Access to KMT's extensive cutting library
- Quick + easy ordering at [KMTGenuineParts.com](http://KMTGenuineParts.com)



## Expert Service, Support, and Parts On-Demand

Increase profits while maximizing uptime with *KMT Genuine Parts & Service*. Our world-class service and support programs, **KMT 360°** and **KMT 360° Assured**, are designed to keep your ultrahigh-pressure systems running at peak performance, with minimal effort from you.

Receive targeted, **personalized support** for your UHP pump, including **free preventive maintenance** and **free consumable waterjet parts** like high pressure seals, cutting heads, and focus tubes. Plus, you enjoy **exclusive discounts** on parts and service.

When you join a KMT Genuine Service program you are matched with a local KMT technician, who is dedicated to supporting your business and protecting the health of your ultrahigh-pressure waterjet system.

Your technician will perform a free post-installation assessment. Here we will learn to understand your business, how you expect to run your equipment, ensure that your system setup meets KMT Waterjet's specifications, and will train your team on basic operations of the pump.

Preventive maintenance is then scheduled at specific intervals intervals, based on your expected usage rates, guaranteeing that your waterjet performs at its optimal level and ensuring that downtimes are always properly managed. We arrive on site with fully stocked service vehicles, prepared to replace any components on your equipment or restock your inventory. No separate PO's, additional shipping costs, or waiting for replacement parts to arrive.

PRO 90,000 PSI Waterjet Pump Service Programs	KMT360°	KMT360° Assured
	1 Year Support Plan	2 Year Support Plan
Warranty (Standard is One Year)	2 Years	3 Years
Warranty Hours (Standard = 2000 Hours)	3500 Hours	5000 Hours
Comprehensive Post Installation Check-up by KMT Genuine Service *	FREE	FREE
Free Prescheduled Preventive Maintenance by KMT Genuine Service *	4	6
Free Consumable PM Kits Provided by KMT Genuine Parts †	4	6
Discount on KMT Genuine Parts for Life of PM Program	5%	15%
Priority Service Queue for Field Service Requests	Silver	Gold
Guaranteed On Site Response Time ‡	48 Hours	24 Hours
Discounted Service Rates During Life of Program	10%	20%
Includes Free PRO IDE cutting heads	4	6
Includes Free Premium SHAPE Delta NXT Focusing Tubes	32	48
Free limited supply of SHAPE Mined Materials EcoJet 80 mesh garnet. Δ	4 metric tons	10 metric tons
Fixed Abrasive Pricing for Life of 360 Plus Program	✓	✓
Free Software Updates for Life of Pump	✓	✓
Exclusion from Emergency Service Rates during life of the PM program	✓	✓
Featured on KMT Waterjet's Preferred Contract Cutting Website	✓	✓
Direct Access to Local KMT Genuine Service Technician		✓

\* Excludes airfare † Total for life of program ‡ Emergency Service Only Δ Excludes Freight